



Digital Printing(POP), On-Demand Automatic
Single Side Roll Laminator

PROTOPIC PLUS-520 Series

Single Side Laminator Built-In Pneumatic Controlled Feed Gate
Automatic Feeding, High Pressured Laminating, Automatic Bursting System
Laminating Speed : 15m/min
MAX. Paper Size : (W) 520mm x (L) 720mm

- ▷ PROTOPIC PLUS-520
- ▷ PROTOPIC PLUS-520 F50
- ▷ PROTOPIC PLUS-520 AF20
- ▷ PROTOPIC PLUS-520 F50AF20

※GMP Thermalami Patented

▶ Scratch-Free Matt Film

▶ Embossing Textured Laminating Film

Laminator installed with Embossing Roller

Heat Pressing & Embossing for Thermalami

Index
•F50= Flying Knife 50
•AF20= Auto Feeder 20



POLYNEX Film

- Environmental-Friendly "Thermalami" System that needs no adhesive
- Laminating of the highest grade giving perfect adhesion with all kinds of printed material
- Pneumatically controlled feed gate and Bursting System
- Compact Design saves for valuable office space
- Available High Speed & Long Time Working with Heavy-Duty Structure
- Built-In Slide Tray support Paper Stacking in High Speed Lamination
- Easy to load the Film with both sides opened film shaft
- Easy To Exchange Rollers(Approx. 20min. Only!!)

PROTOPIC PLUS-520 Series



www.gmp.com

ISO 9001:2000 Certificate ISO 14001 Certificate RoHS Certificate UL-WTDP, CB-TMP Lab. Certificate

KOSDAQ Registered Corporation(NO. 018290)

GMP GMP CO., LTD.



PROTOPIC PLUS-520 Series

PROTOPIC PLUS-520 Series provides elegant embossing results during running. It's good for lamination service shop, small & medium print shop, photo shop, advertising material manufacturer.

It makes various laminations of picture, book cover, post card, pamphlet, etc.

Features

- Easy to work at high speed on account of the Slide Tray loading papers
- Easy to load a film Film on account of the Shaft opened one-side
- Perfect Laminating ; designed with more bigger diameter(100mm) of laminating roller and with high pressure(500kg) by air cylinder
- More Efficient Cooling ; Built-in powerful cooling system(Cooling Tube) which can get cooled itself on the surface of film
- Equipped Adjustment Device For Precise Tension of Film Equipped Decurling Device To Control Easier
- Equipped paper cutting device with air cylinder bursting type. / Perforating Wheel To Use Easier
- Available to work at office on account of built-in air compressor designed lightweight & low sound
- Count on superior motor component ball bearings to all driving parts
- Simple maintenance ; fixed panel with electronic parts by sliding type
- Distinguished Durability ; breakdown free due to high speed and/or long hours
- Count on driving circuit and motor with strong torque
- Precise Temperature Control ; Equipped infrared sensors with non contact type



Type of embossing patterns

- ▶ Various types of embossing offer high quality and capacity on demand



• Linen Texture



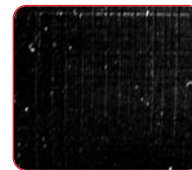
• Fine Texture



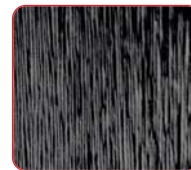
• Leather



• Sparkler



• Silky Texture



• Hair Line

Thermalami Film

- GMP POLYNEX (OPP Base Thermalami Film)

POLYNEX Thermal Gloss - 20	ECONOMIC Gloss Film
POLYNEX Thermal Gloss - 25	Gloss Film
POLYNEX Thermal Pure Gloss - 20	Pure Gloss Film
POLYNEX Thermal Matt - 22	ECONOMIC Matt Film
POLYNEX Thermal Matt - 28	Matt Film
POLYNEX Thermal Pure Matt - 22	Pure Matt Film
POLYNEX Thermal Gloss Emboright - 40	Embossing & High gloss Film
POLYNEX Thermal Matt Antiscuff - 31	Scuff-free matt Film
POLYNEX Thermal Gloss Digital Supermelt - 40	Digital Print Supermelt Gloss Film
POLYNEX Thermal Matt Digital Supermelt - 43	Digital Print Supermelt Matt Film
POLYNEX Thermal Hologram - 40	Hologram Film
POLYNEX Thermal Silver Gloss - 40	Silver Color film for Embossing Laminating

- GMP NYLONEX (Nylon Base Thermalami Film)

NYLONEX Gloss - 27	Curl & Scratch Free Gloss Film
NYLONEX Matt - 31	Curl & Scratch Free Matt Film
NYLONEX Gloss Digital Supermelt - 40	Curl & Scratch Free Gloss Film for Digital Print
NYLONEX Matt Digital Supermelt - 44	Curl & Scratch Free Matt Film for Digital Print

- GMP PERFEX (OPP Base Thermalami Film)

PERFEX Gloss - 25	Gloss Film
PERFEX Gloss - 38	High gloss & Deep Image Film
PERFEX Matt - 32	Matt Film
PERFEX Matt - 38	Deep image Matt film
PERFEX Sliver - 25	High gloss Silver Film

* PERFEX Film for Sliver, Gold & UV printing



Specifications

Model Name		PROTOPIC PLUS-520 Series	
Max. Laminating Speed	15m /min	Max. Laminating Temperature	140 °C MAX.
Max. Laminating Width	520mm	Temperature Control	Jog Dial
Laminating Film	OPP, PET, NYLON	Speed Control	Volume
Thickness of Substrate(Paper)	120~350g/㎡	Temperature & Speed	LCD Panel
Power Requirements	AC 220V, 60Hz	Pressure Control	Pneumatic Cylinder
Power Consumption	2300W / 10.5A	Film Core	77Dual
Warm up Time	10min	Laminator Dimensions	860(W)x1585(L)x595(H)mm
Heating System	Hot Roller Internal Infrared Heater	Weight	240kg

GMP reserves the right to after change specifications without prior notice.